



2018



INTERNATIONAL FIGURE "8" DERBY 4, 6 AND 8 CYLINDER CLASSES

(219) 324-4813 • (219)363-8896 • (219)363-7424 PO Box 245 • La Porte IN. 46352

OFFICIAL RULES AND REGULATIONS FOR FIGURE "8" DERBIES

A few years ago we developed this form of demolition derby as something new for both drivers and spectators. Unlike the traditional demo, in this event it is your ability to out-think and out-maneuver the other guy that makes you the winner . . . not brute force! Drivers all over are switching to Figure "8" derbies because of the challenge. . . With the help of drivers we have developed these rules to make this type of derby fair and fun for all. . .

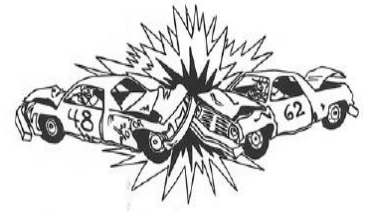
THE RULES FOR "FIGURE 8" RACING IS THE SAME AS DEMOLITION DERBIES WITH THE FOLLOWING EXCEPTIONS:

1. Driver's door must be securely fastened. A bar, bumper, or guard rail must be attached to or in the door. Reinforcement must not extend out from the car more than 3" and be tapered off to the body of the car. In this type of derby we cannot protect the door. **REINFORCEMENT IS MANDATORY.**
Absolutely NO concrete will be allowed. No door reinforcement, No Run.

THE FOLLOWING RULES APPLY ONLY TO FIGURE "8" DERBIES:

2. The front end of your car may be reinforced within the following guidelines:

- A. All reinforcement must be kept behind the original grill & within the original sheet metal.
This includes nothing welded/bolted to the bumper unit itself
(Metal welded to the bumper mounts as supports is okay).
- B. Bars used must not exceed 4" in diameter.
- C. Bars must NOT extend back farther than the center of the strut tower.



The Officials Will Be The Sole Judge Of Excess Reinforcement And May Require You To Add Or Subtract Metal As Needed.

3. Any OEM bumper may be used as long as it is trimmed to fit the car and not set up as a push type bumper. Round/Square/ "C" channel may be used as a Bumper with a maximum thickness of 3/16 inch (uncapped). Anything in excess of 3/16 is subject to cutting or removal. Officials will have the final approval on any non OEM bumper. Fenders and bumper ends may be trimmed to allow for wheel clearance. **Bumper skins may be skip welded to the inner core. Solid welded shock mounts will need an inspection hole of some type.** Bumpers may be wired in four places to sheet metal only.
4. The winner is determined by the first car to cross the finish line after a pre-determined number of laps. Therefore, cars must remain in a forward motion EXCEPT if a bottle neck occurs at a corner. Reverse will be allowed. Deliberate contact while in reverse will result in a disqualification.
5. You can get disqualified for the following: Leaking Gas, Hung-Up on a Log, Reckless Driving, Leaving the Driving Area, Sitting Dead on the Course, and Fire.
6. Starting positions will be determined upon arrival.
7. First Place only gets money and trophy. This person is eligible for the main event.
8. Intentionally leaving the Figure "8" Pattern so as to intentionally hit another driver may cause disqualification.
9. ANY AND ALL DECISIONS OF THE JUDGES ARE FINAL.

Visit us at:
Internationaldemolitionderby.com

INTERNATIONAL FIGURE "8" DERBY OFFICIAL ENTRY BLANK
Please Print

Figure"8"
Car #
PLEASE CHECK BOX
FOR CLASS

Show Date _____

Location _____

4 cyl. 6cyl.
 8 cyl. Truck

MAIL TO: _____

Driver's Name _____ Street Address _____ Email _____

Age _____ City, State, Zip _____ Phone _____

I have read the rules and accept the decision of the Judge as final and elect to use the ground or track in its present condition. I agree to have my car at the race area and sign in at the registration desk at least one hour prior to earliest show time or a \$25.00 fine will be imposed for late arrival.

Entry Fee _____ to accompany entry Signed _____

Only cash or money order payable to **INTERNATIONAL DEMOLITION DERBY** will be accepted. **No checks**